

Public Document Pack

PRESENTATION SLIDES

DEVELOPMENT MANAGEMENT COMMITTEE - WEDNESDAY, 6TH DECEMBER, 2023

The following presentation slides were used at the Development Management Committee meeting.

This page is intentionally left blank

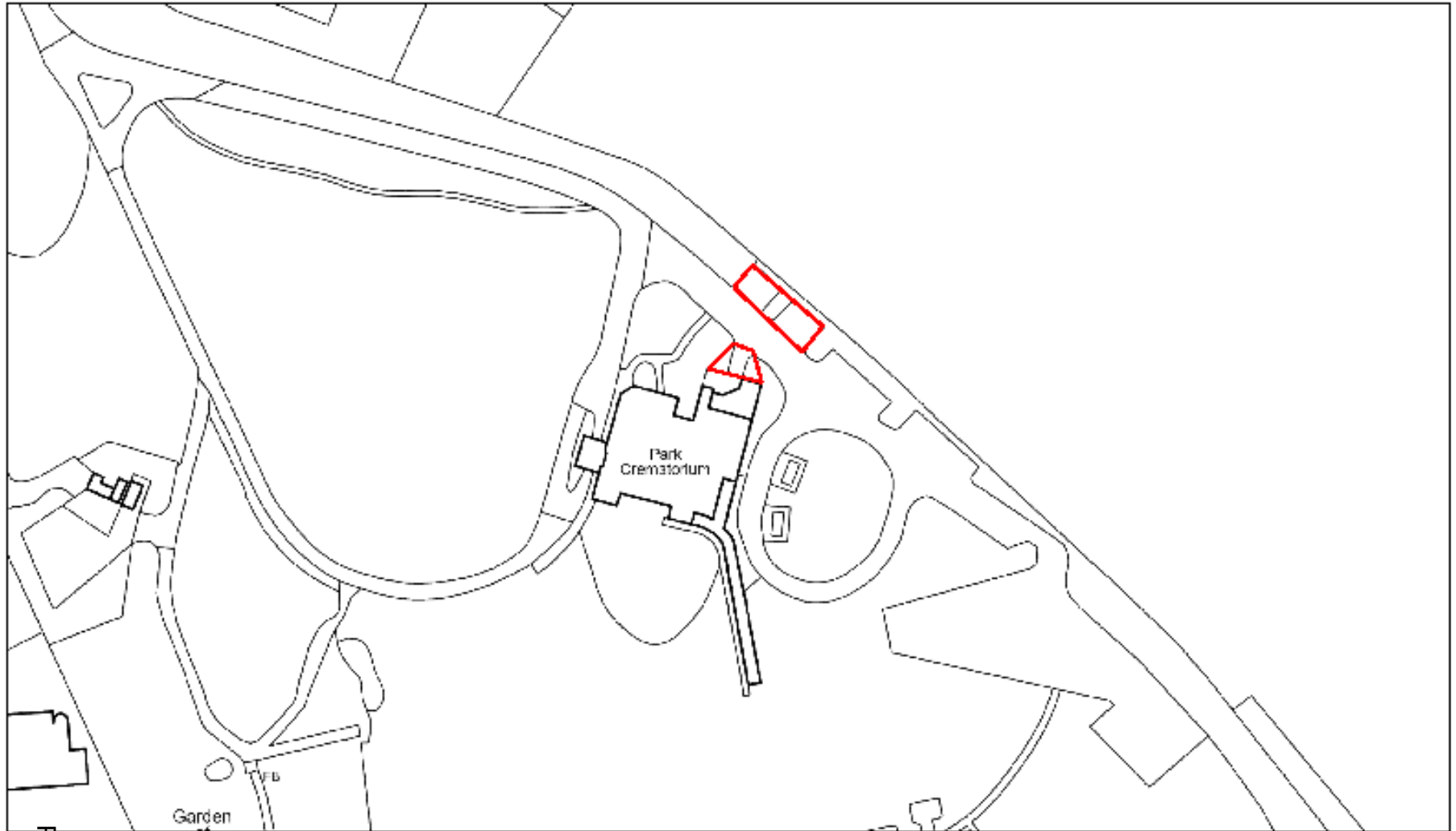
Development Management Committee

6th December 2023

Development Management Committee

Item 5: 23/00765/FUL

**Aldershot Park Crematorium, Guildford
Road, Aldershot**



11/03/2023, 9:54:15 AM

Page 3
Planning Application

1:1,108
0 0.01 0.01 0.03 mi
0 0.01 0.03 0.06 km

ArcGIS Web Map

Page 4



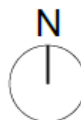
11/17/2023, 9:47:29 AM

 Planning Application

1:1,223
0 0.01 0.02 0.04 mi
0 0.01 0.03 0.06 km





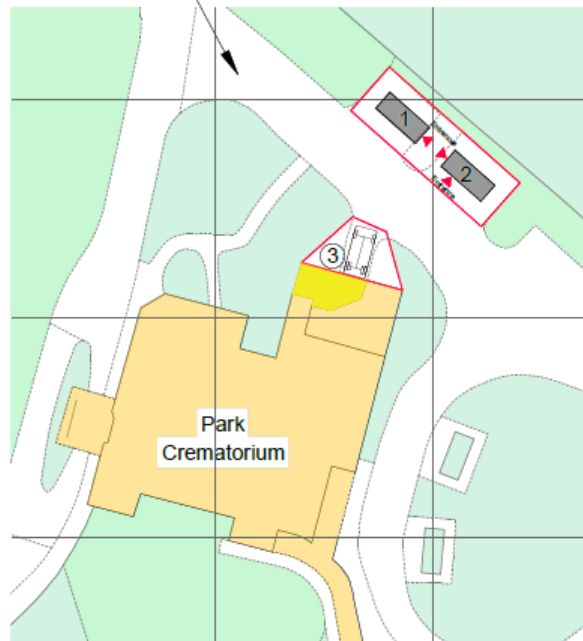


Aldershot Crematorium
Guildford Road
Aldershot
GU12 4BP



Site location plan.
Scale 1:1250 @ A3

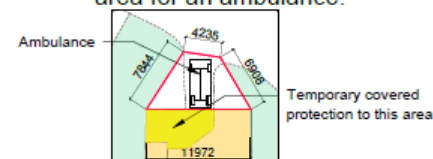
Access road from entrance
in Guildford Road



Block plan.
Scale 1:500 @ A3

KEY:

- ① Storage container.
- ② Welfare container.
- ③ Extension to existing fencing with standard hoarding to form an enclosed area with inward opening access gates to the road. A space provided to enable a private loading area for an ambulance.



Length of proposed additional
perimeter hoarding fencing is
18.98m

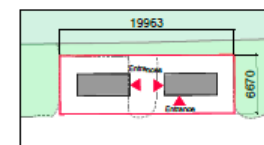
Gross area = 50.72m²

Each container size

6062(l) x 2438(w) x 2502(h)mm
gross area = 14.78m²

Overall area where containers are to be placed

gross area = 133.1m²



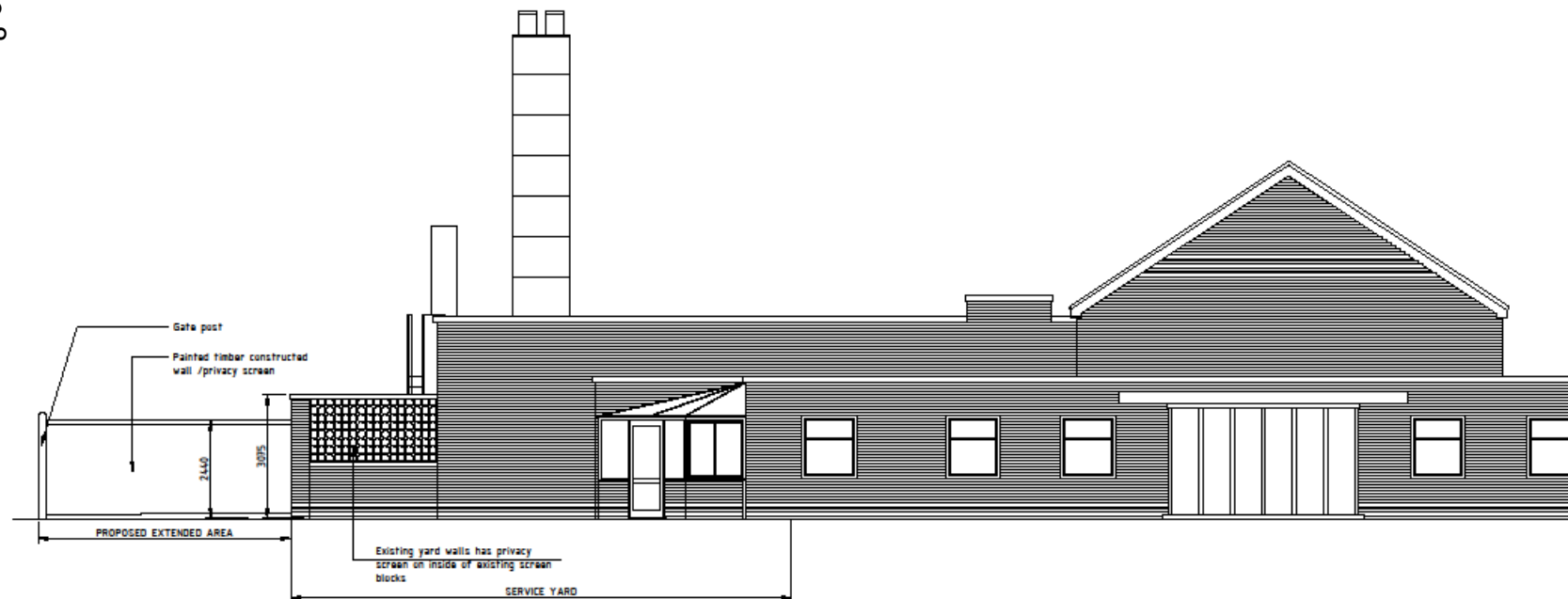
- General
- 1.1 This drawing is to be read in conjunction with all relevant Project drawings together with the Project Specification
 - 1.2 Do not scale off this drawing, work to figured dimensions only.
 - 1.3 Any Discrepancies noted between drawn information are to be reported promptly to the Contract Administrator.
 - 1.4 Temporary works to contractors details

© Cooper & Withycombe
These drawings are not to be copied or
distributed to third parties without the written
consent of Cooper & Withycombe Ltd.

REV	DESCRIPTION	DRAWN	DATE
1	ISSUED FOR CONSTRUCTION	MM	11.10.23
2	ISSUED FOR CONSTRUCTION	MM	11.10.23
3	ISSUED FOR CONSTRUCTION	MM	11.10.23
4	ISSUED FOR CONSTRUCTION	MM	11.10.23
5	ISSUED FOR CONSTRUCTION	MM	11.10.23
6	ISSUED FOR CONSTRUCTION	MM	11.10.23
7	ISSUED FOR CONSTRUCTION	MM	11.10.23
8	ISSUED FOR CONSTRUCTION	MM	11.10.23
9	ISSUED FOR CONSTRUCTION	MM	11.10.23
10	ISSUED FOR CONSTRUCTION	MM	11.10.23

CLIENT	RUSHMOOR BOROUGH COUNCIL
PROJECT	Aldershot Crematorium
TITLE	Proposed location of two shipping containers & new ambulance parking area
PROJECT	19-2009
020	
REVISION	
REVISION	
REVISION	

CLIENT	Cooper & Withycombe
CONSULTING ENGINEERS & BUILDING SURVEYORS	
1000, A10, 10000, View	
1000, A10, 10000, View	
1000, A10, 10000, View	
1000, A10, 10000, View	
1000, A10, 10000, View	
1000, A10, 10000, View	
1000, A10, 10000, View	
1000, A10, 10000, View	
1000, A10, 10000, View	



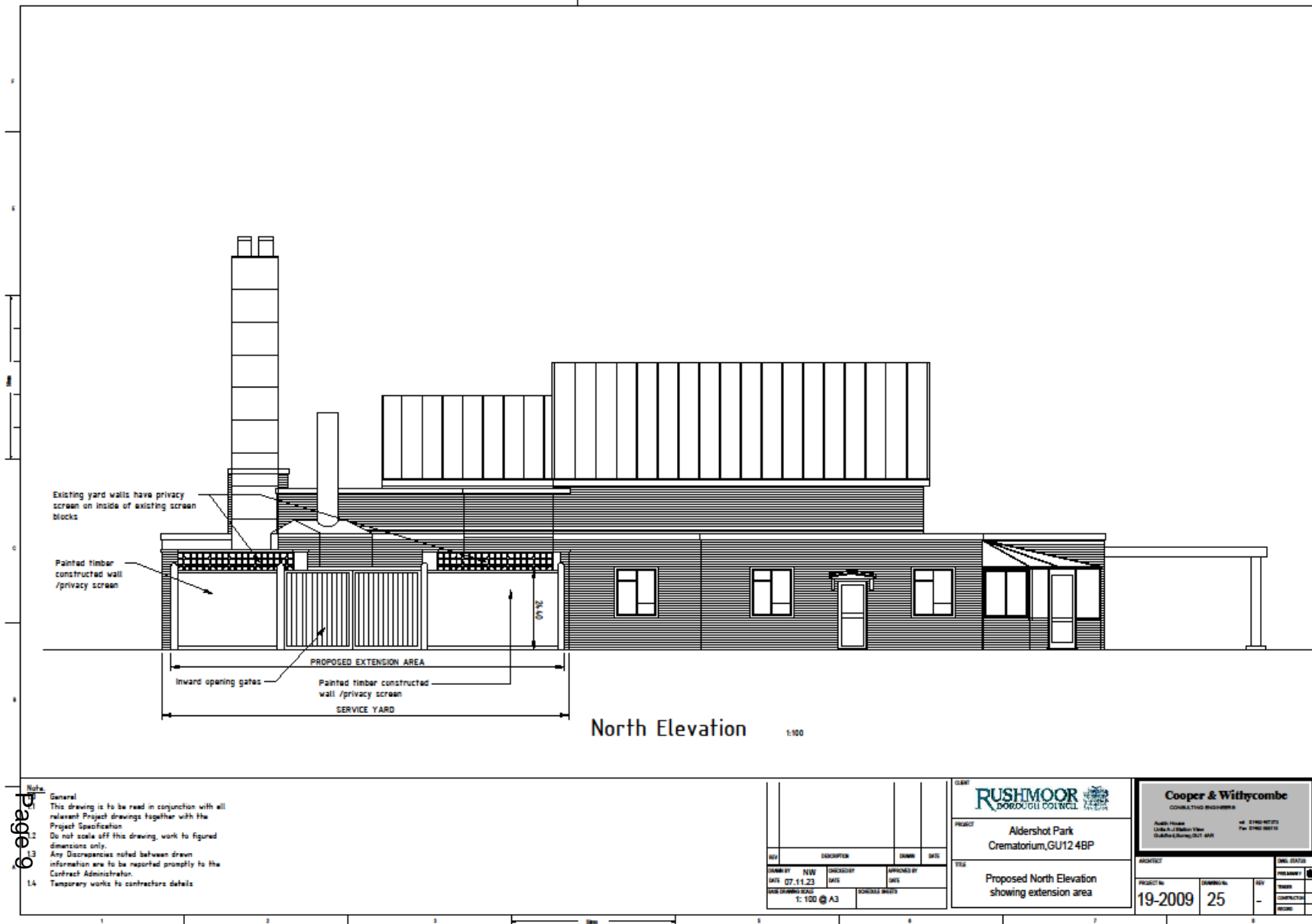
West Elevation 1:100

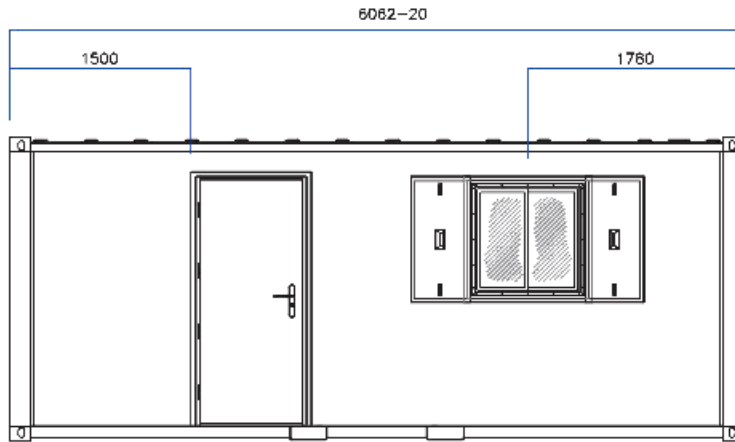
- Note:**
- 1.1 General
 - 1.2 This drawing is to be read in conjunction with all relevant Project drawings together with the Project Specification.
 - 1.3 Do not scale off this drawing, work to figured dimensions only.
 - 1.4 Any Discrepancies noted between drawn information are to be reported promptly to the Contract Administrator.
 - 1.5 Temporary works to contractors details

REV	DESCRIPTION	DRAWN	DAYS
001	ISSUED FOR PERMIT		
002	ISSUED FOR CONSTRUCTION		
003	ISSUED FOR AS-BUILT		
004	ISSUED FOR FINAL		
005	ISSUED FOR ARCHIVE		
006	ISSUED FOR DESTRUCTION		
007	ISSUED FOR REDEMPTION		
008	ISSUED FOR REDEMPTION		
009	ISSUED FOR REDEMPTION		
010	ISSUED FOR REDEMPTION		
011	ISSUED FOR REDEMPTION		
012	ISSUED FOR REDEMPTION		
013	ISSUED FOR REDEMPTION		
014	ISSUED FOR REDEMPTION		
015	ISSUED FOR REDEMPTION		
016	ISSUED FOR REDEMPTION		
017	ISSUED FOR REDEMPTION		
018	ISSUED FOR REDEMPTION		
019	ISSUED FOR REDEMPTION		
020	ISSUED FOR REDEMPTION		
021	ISSUED FOR REDEMPTION		
022	ISSUED FOR REDEMPTION		
023	ISSUED FOR REDEMPTION		
024	ISSUED FOR REDEMPTION		
025	ISSUED FOR REDEMPTION		
026	ISSUED FOR REDEMPTION		
027	ISSUED FOR REDEMPTION		
028	ISSUED FOR REDEMPTION		
029	ISSUED FOR REDEMPTION		
030	ISSUED FOR REDEMPTION		
031	ISSUED FOR REDEMPTION		
032	ISSUED FOR REDEMPTION		
033	ISSUED FOR REDEMPTION		
034	ISSUED FOR REDEMPTION		
035	ISSUED FOR REDEMPTION		
036	ISSUED FOR REDEMPTION		
037	ISSUED FOR REDEMPTION		
038	ISSUED FOR REDEMPTION		
039	ISSUED FOR REDEMPTION		
040	ISSUED FOR REDEMPTION		
041	ISSUED FOR REDEMPTION		
042	ISSUED FOR REDEMPTION		
043	ISSUED FOR REDEMPTION		
044	ISSUED FOR REDEMPTION		
045	ISSUED FOR REDEMPTION		
046	ISSUED FOR REDEMPTION		
047	ISSUED FOR REDEMPTION		
048	ISSUED FOR REDEMPTION		
049	ISSUED FOR REDEMPTION		
050	ISSUED FOR REDEMPTION		
051	ISSUED FOR REDEMPTION		
052	ISSUED FOR REDEMPTION		
053	ISSUED FOR REDEMPTION		
054	ISSUED FOR REDEMPTION		
055	ISSUED FOR REDEMPTION		
056	ISSUED FOR REDEMPTION		
057	ISSUED FOR REDEMPTION		
058	ISSUED FOR REDEMPTION		
059	ISSUED FOR REDEMPTION		
060	ISSUED FOR REDEMPTION		
061	ISSUED FOR REDEMPTION		
062	ISSUED FOR REDEMPTION		
063	ISSUED FOR REDEMPTION		
064	ISSUED FOR REDEMPTION		
065	ISSUED FOR REDEMPTION		
066	ISSUED FOR REDEMPTION		
067	ISSUED FOR REDEMPTION		
068	ISSUED FOR REDEMPTION		
069	ISSUED FOR REDEMPTION		
070	ISSUED FOR REDEMPTION		
071	ISSUED FOR REDEMPTION		
072	ISSUED FOR REDEMPTION		
073	ISSUED FOR REDEMPTION		
074	ISSUED FOR REDEMPTION		
075	ISSUED FOR REDEMPTION		
076	ISSUED FOR REDEMPTION		
077	ISSUED FOR REDEMPTION		
078	ISSUED FOR REDEMPTION		
079	ISSUED FOR REDEMPTION		
080	ISSUED FOR REDEMPTION		
081	ISSUED FOR REDEMPTION		
082	ISSUED FOR REDEMPTION		
083	ISSUED FOR REDEMPTION		
084	ISSUED FOR REDEMPTION		
085	ISSUED FOR REDEMPTION		
086	ISSUED FOR REDEMPTION		
087	ISSUED FOR REDEMPTION		
088	ISSUED FOR REDEMPTION		
089	ISSUED FOR REDEMPTION		
090	ISSUED FOR REDEMPTION		
091	ISSUED FOR REDEMPTION		
092	ISSUED FOR REDEMPTION		
093	ISSUED FOR REDEMPTION		
094	ISSUED FOR REDEMPTION		
095	ISSUED FOR REDEMPTION		
096	ISSUED FOR REDEMPTION		
097	ISSUED FOR REDEMPTION		
098	ISSUED FOR REDEMPTION		
099	ISSUED FOR REDEMPTION		
100	ISSUED FOR REDEMPTION		

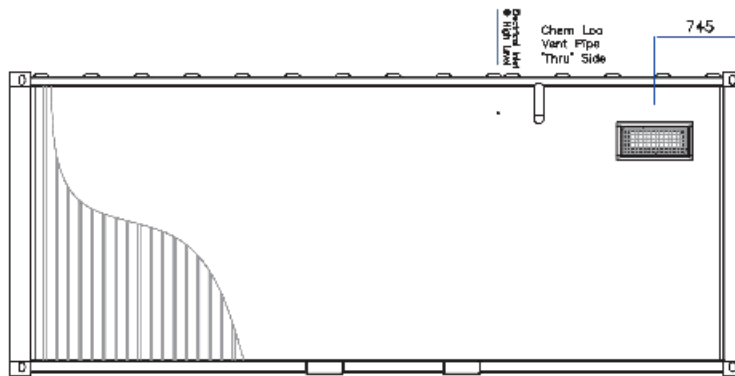
RUSHMOOR BOROUGH COUNCIL
PROJECT Aldershot Park Crematorium, GU12 4BP
TITLE Proposed West Elevation showing extended area

Cooper & Withycombe CONSULTING ENGINEERS
Author: [Name] Date: [Date] Check: [Name] Date: [Date]
PROJECT NO. 19-2009
SUBMITTAL NO. 24
REV. -
DATE 19-09-2009
BY [Name]
FOR [Name]



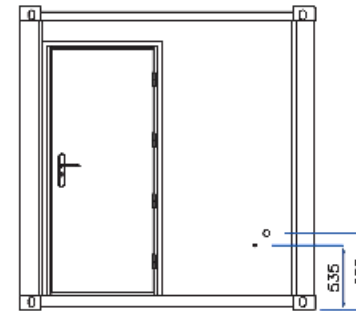


View A.



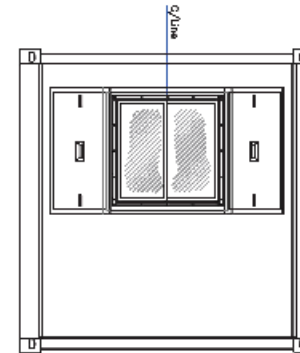
View C.

REFERENCED DRAWINGS:
19-2009-21



View B.

Steel Tube
Reinforced For Both
40mm Waste Cullit
& 15mm Water Inlet
Welded Into Unit.



View D.

Notes

- 10 General
- 11 This drawing is to be read in conjunction with all relevant Project drawings together with the Project Specification
- 12 Do not scale off this drawing, work to figured dimensions only.
- 13 Any Discrepancies noted between drawn information are to be reported promptly to the Contract Administrator.
- 14 Temporary works to contractors details

© Cooper & Withycombe
These drawings are not to be copied or distributed to third parties without the written consent of Cooper & Withycombe Ltd.

		Cooper & Withycombe CONSULTING ENGINEERS & BUILDING SURVEYORS Rushmoor House Liphard, Rushmoor, Reading, RG2 4AH Tel: 01493 627772 Fax: 01493 627773	
PROPOSED WELFARE UNIT ELEVATIONS		PROJECT No: 19-2009 022	
DATE DRAWING MADE: 16.02.23 SCALE: 1:50 @ A3		REV	
DRWN BY: NW CHECKED BY: JWS APPROVED BY: JWS		PROJ STATUS	
DATE DRAWING MADE: 1:50 @ A3 SCHEDULE SHEETS		PROJ STATUS	

Development Management Committee

6th December 2023

This page is intentionally left blank